

±.001

- NOTES:**
- ① MAT'L: COPPER STOCK TKN  $\frac{.031}{.79}$
  - PLATING: ELECTRO-TIN (.0003 MIN.)
  - ② INSULATION: MOLDED PVC (RED)

STUD SIZES: ( $\pm .005$ )

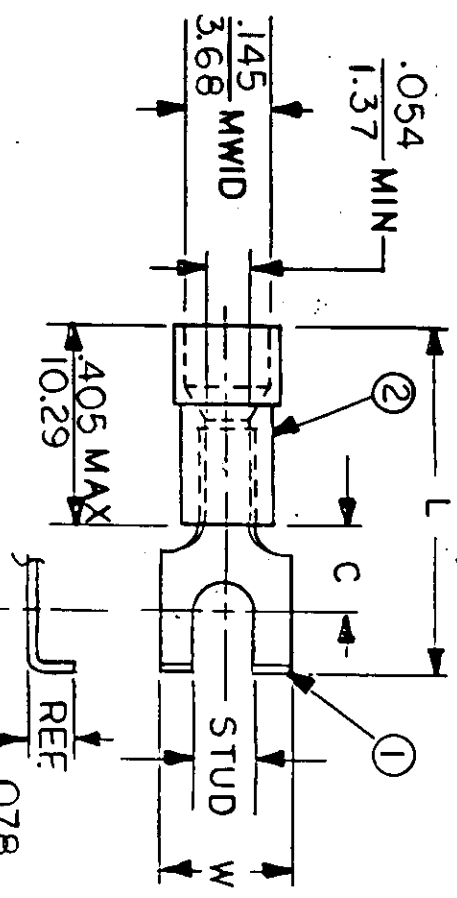
- 02 = .094
- 04 = .119
- 06 = .146
- 08 = .173
- 10 = .198
- 14 = .265
- 56 = .328
- 38 = .390

"UL" LISTING #E32244  
 "CSA" LISTING #18689

ALL DIMENSIONS =  $\frac{\text{INCHES}}{\text{MM}}$

MWID = MAXIMUM WIRE  
 INSULATION DIAMETER

WIRE SIZE: 22-18 AWG  
 .078  
 1.98  
 WIRE SIZE: 25-1.5 MM<sup>2</sup>



PART NUMBER	"W"	"C" MIN.	"L" MAX.	AVAILABLE STUD SIZES
AA-215-	$\frac{.291}{7.39}$	$\frac{.207}{5.26}$	$\frac{.781}{19.84}$	04X, 06X, 08X
AA-290-	$\frac{.420}{10.67}$	$\frac{.235}{5.97}$	$\frac{.865}{21.97}$	06X, 08X, 10X
AA-293-	$\frac{.375}{9.53}$	$\frac{.235}{5.97}$	$\frac{.865}{21.97}$	06X, 08X, 10X
AA-296-	$\frac{.325}{8.25}$	$\frac{.235}{5.95}$	$\frac{.865}{21.97}$	04X, 06X, 08X
AA-2108-	$\frac{.187}{4.75}$	$\frac{.183}{4.65}$	$\frac{.727}{18.47}$	02X, 04X

DIMENSIONAL TOLERANCES UNLESS OTHERWISE SPECIFIED		REFERENCE	SCALE:	NTS	DATE	TITLE:
FRAC.	DEC.	ANG.	DRWN. BY:	JJ	11-5-84	FLANGED SPADE TONGUE TERMINAL INSULKRIMP 200-SERIES
±	±	±	CHKD. BY:	GZ	11-6-84	
			APPRD. BY:			



DWG. NO. A CUSTOMER DWG.